

FLZB1-ECO Flood Sensor



A Universal Electronics Company

Installation Manual & User Guide

SPECIFICATIONS

Frequency: 2.4GHz	Operating Temperature: 32°-120°F (0°-49°C)
Battery: Two, 1.5Vdc AAAA Alkaline (3Vdc Nominal)	Operating Humidity: 5-95% RH non condensing
Battery life: 4 years?	Supervisory signal interval: 27 min(approx.)
Water Detect Depth: Minimum of 0.397mm (1/64")	Maximum current draw: 135mA during transmission
3 rd Party Certifications: FCC, IC, ETL, ZigBee 3.0	

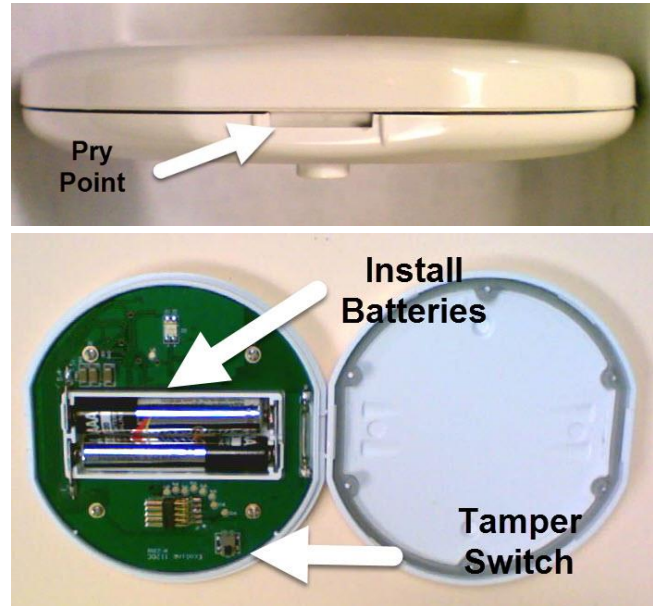
OPERATION

The FLZB1-ECO is a battery-powered sensor for home security or home automation applications. The FLZB1-ECO is triggered by the presence of water in contact with the built in flood probes on the bottom of the case which causes the FLZB1-ECO to transmit.

ENROLLING

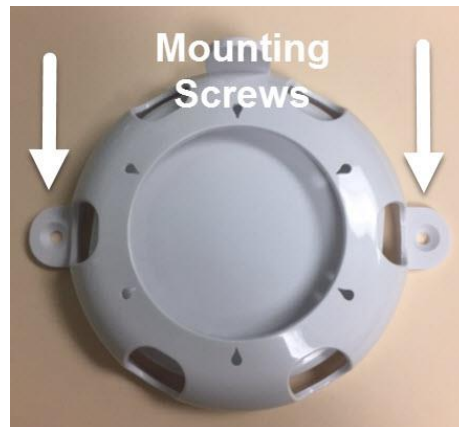
To enroll the sensor, remove the top cover by prying off at one of the tabs on either side. Set your panel into program mode. Refer to your specific alarm panel instruction manual for details on these menus. Once in program mode, place the batteries into the sensor and follow the instructions that appear on the panel. When "Trip to Pair" appears on the screen, press the tamper button to complete the enrollment process. See LED section below for more information on initial power up behavior.

NOTE: For best results, pair the device to your panel before installation.



MOUNTING

The device is designed to be used on a flat surface without the need for mounting. A protective cover is supplied which can be screwed down over the sensor to protect it from damage or from being moved from the set location.



LED

The Flood Sensor is equipped with an LED. On power up, the LED will stay solid for 2 seconds, then blink 3 times every 5 seconds (approx.) when not enrolled with a panel. If the sensor is already enrolled into a network, it will illuminate the LED for approximately 4 seconds and then turn off.

REPLACING THE BATTERY

When the battery is low a signal will be sent to the control panel. To replace the battery:

- 1) Remove the Flood Sensor from installation location by removing protective cover if necessary.
- 2) Pry the cover open using the notched areas on either side.
- 3) Replace the two AAAA 1.5Vdc batteries ensuring the + side of the battery faces as indicated on the device.
- 4) Re-attach the cover, you should hear a solid snap when cover engages properly.
- 5) Replace the protective plate if necessary.

REBOOTING AND RESETING TO FACTORY DEFAULTS

In order to reboot the device, simply remove the battery and place it back in. Upon doing this, you should see the LED illuminate. See LED section for more information on LED behavior.

To reset the device to factory defaults use the following instructions:

1. Open case and remove battery from device.
2. Press and hold tamper switch.
3. Place battery back into the device while still holding the tamper switch.
4. When you see the LED illuminate, release the tamper switch.
5. After releasing the switch, the device will restore to factory defaults and the LED should begin blinking again.

PACKAGE CONTENTS

Included Items:

- 1 x FLZB1-ECO Flood Sensor
- 1 x Protective Plate
- 2 x Mounting Screws
- 2 x AAAA batteries
- 1 x Installation Manual

Non-Included Items:

- Security Control panel



FCC COMPLIANCE STATEMENT

This equipment has been tested and found to comply with the limits for Class B digital devices, pursuant to Part 15 of the FCC Rules. These limits are designed to provide reasonable protection against harmful interference in a residential installation. This equipment generates uses and can radiate radio frequency energy and, if not installed and used in accordance with the instruction manual, may cause harmful interference to radio communications. However, there is no guarantee that interference will not occur in a particular installation. If this equipment does cause harmful interference to radio or television reception, which can be determined by turning the equipment off and on, the user is encouraged to try to correct the interference by one or more of the following measures:

- Re-orient or relocate the receiving antenna
- Increase the separation between the equipment and receiver
- Connect the equipment to an outlet on a different circuit from the receiver
- Consult the dealer or an experienced radio/TV contractor for help.

WARNING: Changes or modifications not expressly approved by Ecolink Intelligent Technology Inc could void the user's authority to operate the equipment.

This device complies with Part 15 of the FCC Rules. Operation is subject to the following two conditions: (1) this device may not cause harmful interference, and (2) this device must accept any interference received, including interference that may cause undesired operation.

C'et appareil est conforme la norme d'Industrie Canada exempts de licence RSS. Son fonctionnement est soumis aux deux conditions suivantes:

(1) c'et appareil ne peut pas provoquer d'interférences, et (2) c'et appareil doit accepter toute interférence, y compris les interférences qui peuvent causer un mauvais fonctionnement de la dispositif.

This device complies with Industry Canada license-exempt RSS standard(s). Operation is subject to the following two conditions: (1) this device may not cause interference, and (2) this device must accept any interference, including interference that may cause undesired operation of the device.

FCC ID: XQC-FLZB1ECO IC: 9863B-FLZB1ECO

WARRANTY

Ecolink Intelligent Technology Inc warrants that for a period of 3 years from the date of purchase that this product is free from defects in material and workmanship. This warranty does not apply to damage caused by shipping or handling, or damage caused by accident, abuse, misuse, misapplication, ordinary wear, improper maintenance, failure to follow instructions or as a result of any unauthorized modifications. If there is a defect in materials and workmanship under normal use within the warranty period Ecolink Intelligent Technology Inc shall, at its option, repair or replace the defective equipment upon return of the equipment to the original point of purchase. The foregoing warranty shall apply only to the original buyer, and is and shall be in lieu of any and all other warranties, whether expressed

or implied and of all other obligations or liabilities on the part of Ecolink Intelligent Technology Inc neither assumes responsibility for, nor authorizes any other person purporting to act on its behalf to modify or to change this warranty, nor to assume for it any other warranty or liability concerning this product. The maximum liability for Ecolink Intelligent Technology Inc under all circumstances for any warranty issue shall be limited to a replacement of the defective product. It is recommended that the customer check their equipment on a regular basis for proper operation.

THE LIABILITY OF ECOLINK INTELLIGENT TECHNOLOGY INC, OR ANY OF ITS PARENT OR SUBSIDIARY CORPORATIONS ARISING FROM THE SALE OF THIS SMOKE ALARM DETECTOR OR UNDER THE TERMS OF THIS LIMITED WARRANTY SHALL NOT IN ANY CASE EXCEED THE COST OF REPLACEMENT OF A SMOKE ALARM DETECTOR AND, IN NO CASE, SHALL ECOLINK INTELLIGENT TECHNOLOGY INC, OR ANY OF ITS PARENT OR SUBSIDIARY CORPORATIONS BE LIABLE FOR CONSEQUENTIAL LOSSES OR DAMAGES RESULTING FROM THE FAILURE OF THE SMOKE ALARM DETECTOR OR FOR BREACH OF THIS OR ANY OTHER WARRANTY, EXPRESS OR IMPLIED, EVEN IF THE LOSS OR DAMAGE IS CAUSED BY THE COMPANY'S NEGLIGENCE OR FAULT.

The Firefighter™ detector does not detect the presence of smoke, heat, or fire directly. It relies solely on the presence of an audio alarm signal generated by an existing smoke or fire detector in proximity to the Firefighter™ detector to make such a determination. The Firefighter™ detector must be used with smoke detectors certified according to UL Standards, and in strict accordance with the installation and operation instructions provided with such detectors. It is the owner's responsibility to ensure that smoke or fire detectors used in conjunction with the Firefighter™ detector are maintained and tested on a regular basis in accordance with the manufacturer's instructions. Ecolink Intelligent Technology Inc expressly disclaims any responsibility for the failure of the Firefighter™ detector to detect the presence of smoke or fire due to the failure of any smoke or fire detector used in conjunction with the Firefighter™ detector to operate properly due to any condition, including improper installation, operation, maintenance or testing of such smoke or fire detector.



Ecolink Intelligent Technology Inc.
2055 Corte Del Nogal
Carlsbad CA 92011

PN FLZB1-ECO R1.00
Rev Date 07/21/17