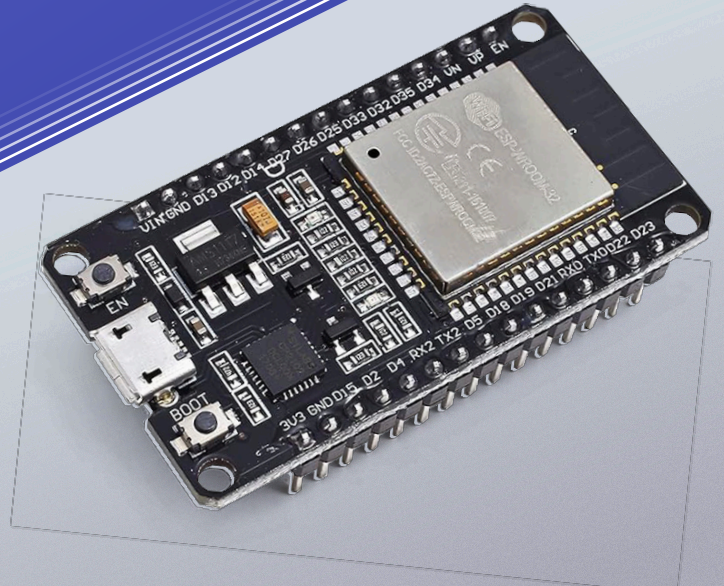


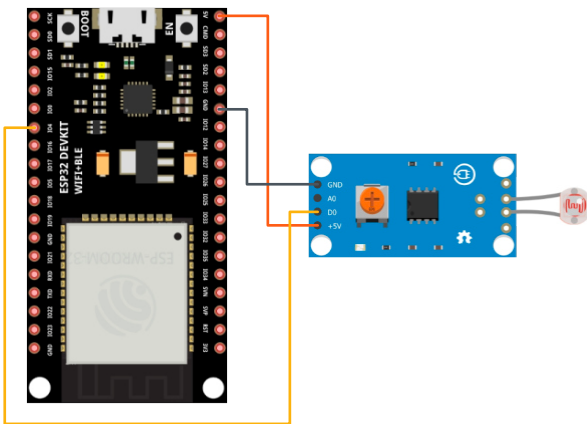
# EzloPi - The Smart Home Platform for Makers

Designed for Doers, Not Learners



## Plug-and-Play Simplicity

EzloPi arrives pre-flashed with ESP32, instantly detected by the MiOS app on iOS or Android. Just connect, configure your device, and start building projects immediately. With minimal setup, EzloPi eliminates the steep learning curve common in DIY platforms, empowering makers to focus on creating.



## Cost-Effective and Scalable

EzloPi provides a budget-friendly platform to enter the world of IoT and automation without high initial costs or complicated setups. As your projects grow, EzloPi grows with you, offering the flexibility to scale without additional investment.

## Key Features for Makers

- **Seamless MiOS Integration:** EzloPi integrates effortlessly with MiOS, offering one-click setup for all your devices. Control and configure everything via the MiOS app with minimal technical steps.
- **Home Assistant Compatibility (Upcoming):** EzloPi will soon integrate with Home Assistant, giving makers who use the platform new possibilities for seamless automation.
- **3D Enclosures and Ready-Made Devices:** Choose from an ever-growing library of 3D-printed enclosures and ready-made devices, allowing you to customize without the hassle of sourcing or designing hardware

**EzloPi supports hobbyists, small businesses and individual makers in bringing their ideas to life**

**Creation with EzloPi - the Smart Home Platform for Makers**



**Smart Home Projects:**

Simplify and customize control over lights, locks, and climate systems with EzloPi's ready-made automation infrastructure.



**Prototyping IoT Devices:**

Connect a variety of sensors (temperature, motion, light) and actuators to EzloPi to bring your IoT ideas to life.

## Board Features

### ESP32 CP2012 USB C

(Type-C) core board, it has 38 pins and more features than a 30-pin module. Narrower width, can be connected to the breadboard very well.

### Radios:

2.4GHz WiFi+Bluetooth Dual-mode, support STA/AP/STA+AP mode, universal AT command, easy to use.

### ESP32:

integrates antenna, switches, RF balun, power amplifiers, low noise amplifiers, filters and power management modules.

### Interfaces:

Support many kinds of interfaces such as UART/SPI/I2C/PWM/DAC/ADC.

## Technical specifications

- Model number: 3-01-1842
- Board type: ESP32 CP2012 USB C (Type-C) core board
- Item Weight: 1.41 ounces
- Package Dimensions: 4.25 x 3.23 x 1.54 inches
- Number of Processors: 2

## Get Started with EzloPi

Visit [ezloPi.com](http://ezloPi.com) or call 866-966-2272 to start your IoT journey.